

# NICK OF TIME

**INTRO:** |drums...|.....|Dm7 C/E Fmaj7 | G Am7 | Dm7 | Dm7/G | x2 |c |c |

1 2 3 4 12 3 4

|Dm7 |c/E |F |c/G |

A friend of mine she cries at night, and she calls me on the phone

|Dm7 |c/E |F |c/G |

Sees babies everywhere she goes and she wants one of her own

|Dm7 |c/E |F |c/G |

She's waited long enough she says and still he can't decide

|Dm7 |c/E |E+/D |Am |Dm7 |c/E |F F/G |c |c |

Pretty soon she'll have to choose and it tears her up inside She's scared.. scared she'll run out of time ^

|Dm7 |c/E |F |c/G |

I see my folks, they're getting old, and I watch their bodies change

|Dm7 |c/E |F |c/G |

I know they see the same in me, and it makes us both feel strange

|Dm7 |c/E |F |c/G |

No matter how you tell yourself, it's what we all go through

|Dm7 |c/E |E+/D E/D |Am Dm7 |Dm7 |

Those lines are pretty hard to take when they're starin' back at you

|Dm7 C/E F F/G |c |c |

Scared you'll run out of time

|Bb |F |c |Dm7 |

When did the choices get so hard? With so much more at stake

|Dm7 |c/E |E+/D |Am |Dm7 |Dm7 C/E F F/G |Dm7 |

Life gets mighty precious when there's less of it to waste Hmmmmm...

|Dm7 C/E F F/G |Dm7 |Dm7 C/E F F/G |c |c |

Scared to run out of time

|Dm7 |c/E |F |c/G |

Just when I thought I'd had enough and all my tears were shed

|Dm7 |c/E |F |c/G |

No promise left unbroken, there were no painful words unsaid

|Dm7 |c/E |F |c/G |Dm7 |c/E |

You came along and showed me how to leave it all behind You opened up my heart again and then

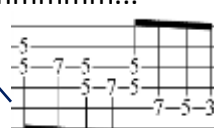
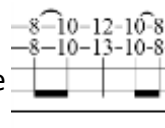
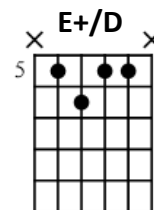
|E+/D |Am |Dm7 |Dm7 C/E F F/G |Dm7 |Dm7 C/E F F/G |Dm7 |

much to my surprise I found love, love in the nick of time (Love in the nick of time) I found love

|Dm7 C/E F F/G |Dm7 |Dm7 C/E F F/G |Dm7 |c/E F F/G Dm7 |c |c |

(Love in the nick of time) Love in the nick of time I found love, baby Love in the nick of time

**OUTRO:** |Dm7 C/E Fmaj7 | G Am7 | Dm7 | Dm7/G | x4 |c |c |



**Intro**  
Moderately ♩ = 120

\*Dm7 Riff A
C/E Fmaj7
G
Am7
Dm7
End Riff A

Rhy. Fig. 1
End Rhy. Fig. 1

\*\*(\*in 1)

*mf* w/ fingers

let ring -----

\*Chord symbols reflect implied harmony.  
\*\*(\*in 1)

Dm7/G
Dm7
C/E Fmaj7
G
Am7
Dm7
End Riff C

Riff B

End Riff B Riff C

let ring -----

Rhy. Fig. 1
End Rhy. Fig. 1
Rhy. Fig. 2
End Rhy. Fig. 2

let ring -----